

Details of Infrastructure and Instructional facilities along with physical photographs
as per NCTE's Regional, 2014 (Amended up to 2017)

Sl No.	Details of Rooms	Number	Area in Sq. Meter
1	<i>ADMINISTRATIVE OFFICE</i>	1	33.44
2	ADMINISTRATIVE OFFICE	1	22.30
3	ART & CRAFT RESOURCE CENTRE	1	36.85
4	CLASS ROOM	1	38.65
5	CLASS ROOM	1	38.65
6	<i>CLASS ROOM-1</i>	1	59.46
7	<i>CLASS ROOM-2</i>	1	59.46
8	<i>CLASS ROOM-3,4</i>	2	99.87
9	<i>CLASS ROOM-5,6</i>	2	94.44
10	CURRICULUM LAB	3	36.85
11	CURRICULUM LAB	4	38.65
12	<i>FRONT LOUNGE</i>	1	71.35
13	<i>GENTS TOILET</i>	1	36.85
14	GEOGRAPHY LAB	1	33.44
15	GIRLS COMMON ROOM	1	22.30
16	<i>GUEST ROOM</i>	1	18.26
17	HEALTH & PHYSICAL EDUCATION RESOURCE CENTRE	1	33.44
18	<i>ICT RESOURCE CENTRE</i>	1	29.26
19	<i>LADIES TOILET</i>	1	18.58
20	LANGUAGE LAB	1	25.70
21	<i>LIBRARY STACK & READING ROOM</i>	1	75.25
22	MULTIPURPOSE HALL	1	216.15
23	<i>OFFICE ROOM</i>	1	33.44
24	PRINCIPAL'S OFFICE	1	22.30
25	PSYCHOLOGY LAB	1	25.70
26	SCIENCE & MATH LAB	1	36.85
27	<i>SCIENCE LAB</i>	1	29.41
28	SEMINAR HALL	1	56.30
29	<i>STORE ROOM</i>	1	18.26
30	STORE ROOM	1	33.44
31	<i>TEACHERS ROOM</i>	1	36.85
32	<i>TOILET BLOCK</i>	1	18.58
33	TOILET BLOCK	1	15.33
34	TOILET BLOCK	1	15.33
35	TOILET BLOCK	1	15.33
36	VISITORS ROOM	1	23.30





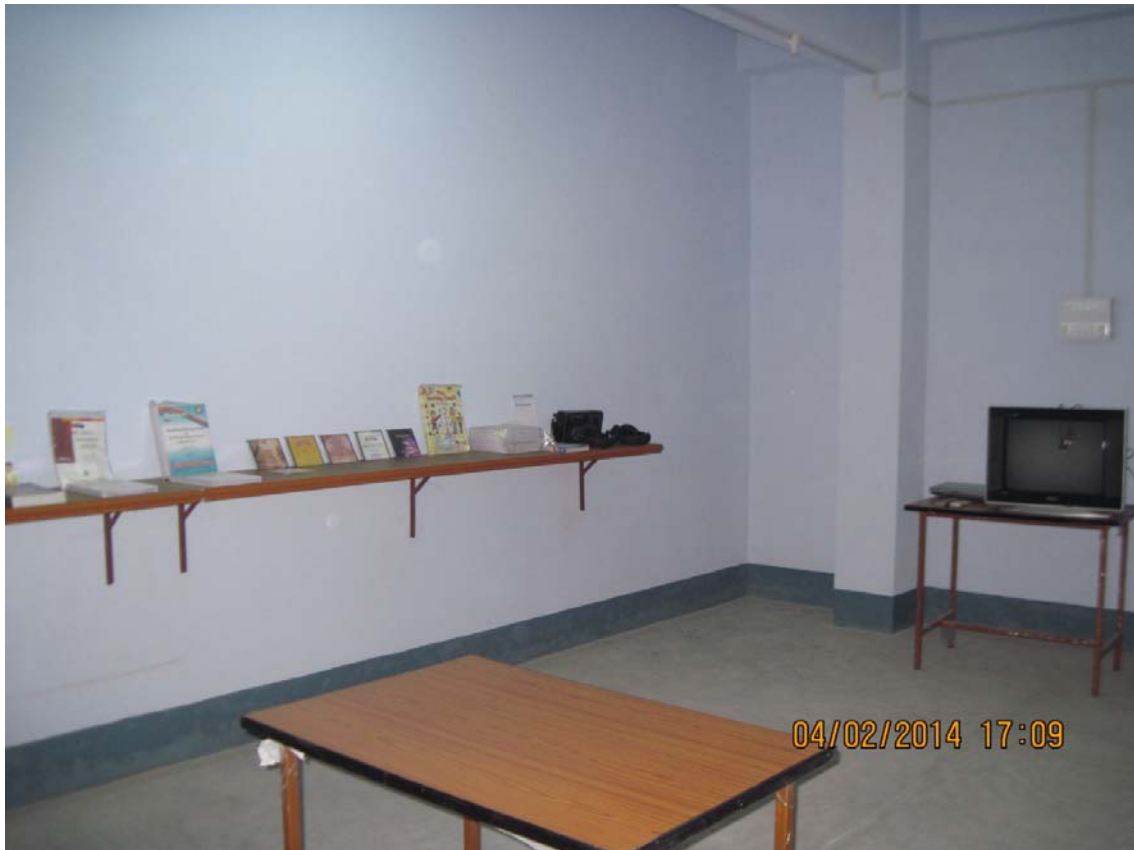






















0410515014 11:53

